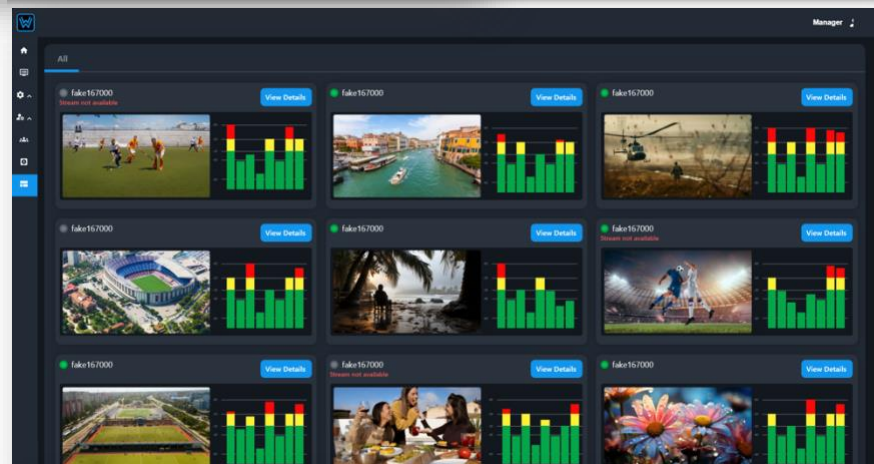




Our **REMOTE MONITORING** application - part of the MAVRIC suite of software-based solutions - allows you to **HEAR** audio, **WATCH** video, and **VIEW** meters, loudness, and other data from one or more signal probes in any global location. All information is directly accessible on your desktop browser, laptop, or via our MAVRIC app (available for both Apple & Android devices) on your tablet or smartphone.

**FEATURES:**

- Remotely listen to individual audio channels (8/16), or a stereo downmix of selected audio clusters.
- Remotely view audio meters and loudness levels for selected audio clusters and video signals.
- Remotely view signal metadata for all monitored signals.
- Support on-site and off-site personnel located across remote infrastructure like OB vans and remote data centers/TCR's.
- Enable rapid pinpointing and resolution of problems during live events.
- Seamlessly integrate monitoring systems across worldwide locations.
- Monitor signals remotely using a standard Internet browser or via an Android/iOS App.
- Construct your own multiviewer from probes deployed anywhere in the world.
- Create probe configuration presets to select video source along with any selection of 8/16 audio channels for remote monitoring.



**FEATURES (Continued):**

- Use with built-in software audio probes available on all current Wohler iSeries and eSeries in-rack monitors.
- Use with Signal probes available as hardware option card installed in your in-rack Wohler monitors, or on available Wohler openGear monitoring cards for remote monitoring.

## Specifications:

- Probes as well as number of concurrent users can be scaled independently.
- For on-premise installations please contact Wohler for precise server specifications required to run the application.
- Regular bug-fixes, security patches and feature enhancements are covered by an Annual Maintenance contract (AMC).
- Installation:
  - Deployed on-premise, in the Cloud or as a hybrid installation, with secure encrypted communications across all interfaces and signal sources.
  - Also available as a hosted service managed entirely by Wohler

## Ordering Options:

Product	Part ID	Description
<b>MAVRIC-Remote Monitoring</b>	8500-2100	Initial installation licensed to monitor 5 probes. Additional probes can be licensed as per requirements in blocks of 5. Deploy on-premise, in the Cloud or as a hybrid installation, with secure encrypted communications across all interfaces and signal sources. Also available as a hosted service managed entirely by Wohler. Subject to Annual Maintenance.
<b>MAVRIC-Remote Monitoring (5)</b>	8500-2105	As above, but 5 License Add-on, subject to Annual Maintenance.
<b>OPT-RM-AUDIO-ONLY</b>	-	Software Probe option. Installed by default on both iSeries and eSeries in-rack monitors.
<b>Annual Maintenance Charge (AMC)</b>	8500-0300	AMC runs from the date of purchase until 31st December of the following year. Subsequent AMCs must be renewed annually by the 1st January.
<b>Compatible Hardware enabling 16 channels of audio and video streaming</b>		
<b>OPT-RMOC-12G (1U)</b>	829189	Signal probe option card for <b>iSeries in-rack monitors</b> , installed in the option card slot. Single SFP slot for 12G SDI or ST2110 input. Capable of monitoring 16 Channels of Audio along with a single Video input. Both audio and video are selectable from a choice of sources connected directly to the card, or inputs connected to the in-rack monitor.
<b>OPT-RMOC-12G (2U)</b>	829190	As for 829189 for 2U <b>iSeries in-rack monitors</b> .
<b>RMOG-12G-SDI</b>	8140-0200	openGear monitor card with remote GUI for use and access, but also compatible with MAVRIC, accepts 2 x 12G-SDI inputs on BNC with 1 selected output. Options available for SDI on Fiber, 2110 and 2022, and for hitless AES67, Dante or Ravenna AoIP
<b>OPT-RMOG DANTE</b>	829192	Enables monitoring of up to 64ch Dante™ Inputs to RMOG-12G-SDI. Hardware card with software activation key. Adds primary & secondary RJ-45 ports for hitless/2022-7 support (for Dante and 2110-30 signals).
<b>OPT-RMOG RAVENNA</b>	829193	Enables monitoring of up to a 64ch of Ravenna™ AES67 Inputs to RMOG-12G-SDI. Hardware card with software activation key. Adds primary & secondary RJ-45 ports for hitless/2022-7 support (for Dante and 2110-30 signals).

## MAVRIC LITE Monitors 16 channels of audio (2 audible at a time) per unit – Available for all current eSeries and iSeries in-rack monitors.

<b>Remote Monitoring-LITE</b>	8500-2100	License handles up to 10 <b>iSeries</b> or <b>eSeries in-rack monitors</b> . Deploy on-premise, in the Cloud or as hybrid installation, with secure encrypted communications across all interfaces and signal sources. Also available as a hosted service managed entirely by Wohler.
<b>Remote Monitoring-LITE 5</b>	8500-2115	5 License add-on for Remote Monitoring -LITE, subject to Annual Maintenance.
<b>Annual Maintenance Charge (AMC)</b>	8500-0300	As for MAVRIC-Automated alerts.